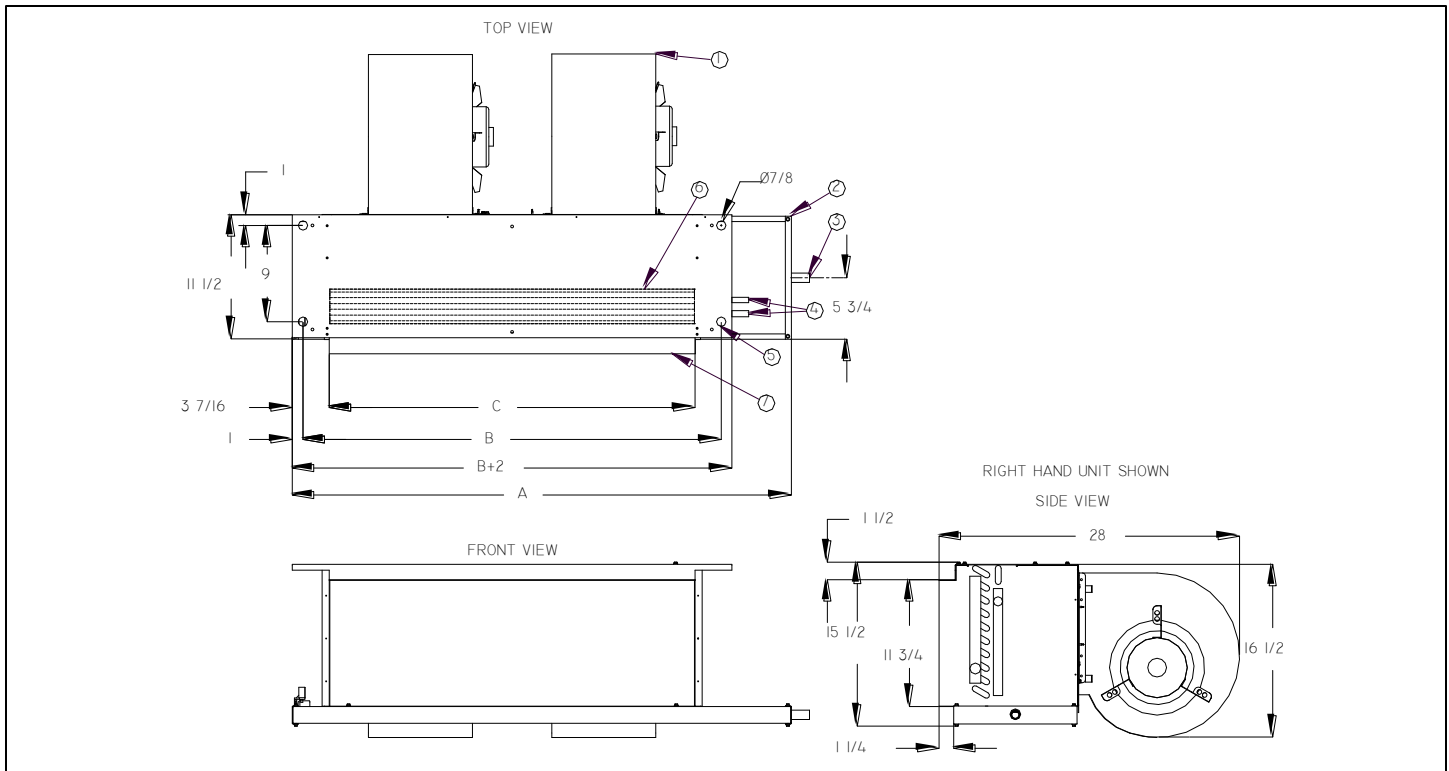


**AHO**

Horizontal High Output Concealed Cabinet



Model	Dimensions (inches)				Approx. Weight (lb)
	A	B	C	D	
AHO06	25 1/2	18	13	5/8	60
AHO08	30 1/2	23	18	5/8	69
AHO10	33 1/2	26	21	7/8	75
AHO12	38 1/2	31	26	7/8	99
AHO14	42 1/2	35	30	7/8	108
AHO16	46 1/2	39	34	7/8	115
AHO18	51 1/2	44	39	7/8	125
AHO20	55 1/2	48	43	7/8	175

1. Blower / motor assembly
2. Condensate pan
3. Drain connection - 3/4" MNPT
4. Chilled water connections (supply and return)  
O.D. = 'D'; Hot water connections = 5/8" O.D.
5. Mounting holes with rubber grommets
6. Coil assembly
7. Supply air duct collar

**Accessories (Optional)**

Check  if provided.

- Thermostat \_\_\_\_\_
- Control Transformer & Fan Relays
- Aquastat Changeover Switch

- Unit Disconnect Switch
- Fuse

This submittal is meant to demonstrate general dimensions of this product. The drawings are not meant to detail every aspect of the product. Drawings are not to scale.

Superior Rex reserves the right to make changes without written notice.

All rights reserved. No part of this work may be reproduced or transmitted in any form or by any means, electronic or mechanical, including photocopying and recording, or by any information storage retrieval system without permission in writing from Air Distribution Technologies.

Unit Accessories

Valve Package (Optional)

Coil - 1/2" O.D. Copper Tube; 10 Fins/Inch Aluminum, Sine Wave

2-Pipe  
 3-Row (STD.)     4-Row (STD.)     5-Row     6-Row

4-Pipe (Cooling Rows/Heating Rows)  
 2/1-Row     3/1-Row     3/2-Row     4/1-Row     4/2-Row     5/1-Row

Chilled Water Cooling                       Hot Water Heating  
 Glycol Cooling                                       Glycol Heating

Motor

Motor(s) - 3 speed PSC  
 Standard  
 115V/60Hz/1ph

Model	HP	Total Amps
AHO06	1/4	3.6
AHO08	1/4	4.3
AHO10	1/4	4.3
AHO12	1/3	5.1
AHO14	2 X 1/4	2 X 4.2
AHO16	2 X 1/4	2 X 4.4
AHO18	2 X 1/4	2 X 4.6
AHO20	2 X 1/3	2 X 4.5

Optional:  
 208V/60Hz/1ph  
 230V/60Hz/1ph  
 277V/60Hz/1ph

Features:  

- Automatic Reset
- Thermal Overload Protection System

Electric Heat – Single Phase (Optional)

Heater Voltage

115V  
 208V  
 230V  
 277V

		Electric Heater kW Primary or Supplementary			
		115 Volts	208 Volts	230 Volts	277 Volts
Size	Blowers	Min-Max kW	Min-Max kW	Min-Max kW	Min-Max kW
06	1	1-4 kW	1-6 kW	1-6 kW	1-6 kW
08	1	1-4 kW	1-6 kW	1-6 kW	1-6 kW
10	1	1-4 kW	1-6 kW	1-6 kW	1-6 kW
12	1	1-4 kW	1-6 kW	1-6 kW	1-6 kW
14	2	1-4 kW	1-9 kW	1-10 kW	1-10 kW
16	2	1-4 kW	1-9 kW	1-10 kW	1-10 kW
18	2	1-4 kW	1-9 kW	1-10 kW	1-10 kW
20	2	1-4 kW	1-9 kW	1-10 kW	1-10 kW

This submittal is meant to demonstrate general dimensions of this product. The drawings are not meant to detail every aspect of the product. Drawings are not to scale.

Superior Rex reserves the right to make changes without written notice.

All rights reserved. No part of this work may be reproduced or transmitted in any form or by any means, electronic or mechanical, including photocopying and recording, or by any information storage retrieval system without permission in writing from Air Distribution Technologies.

## Condensate/ Drain Pan

- |  |  |
|--|--|
| <input type="checkbox"/> Galvanized (STD.)             | <input type="checkbox"/> Safety Overflow Float Switch* |
| <input type="checkbox"/> Safety (Two) Drain Connection |  |
| <input type="checkbox"/> Extension Plate               |  |
| <input type="checkbox"/> Mastic Coating                |  |
| <input type="checkbox"/> Stainless Steel Inner Layer   |  |

Description: Inner and Outer Layer of 18 gauge Galvanized Sheet Metal with One - Inch Internal Insulation

\*24V, requires transformer and fan relay if not obtained with a 24V thermostat.

## Valves and Valve Accessories

- |  |  |
|--|--|
| <input type="checkbox"/> Shut - Off Valve(s)             | <input type="checkbox"/> Strainer(s)                     |
| <input type="checkbox"/> Shut - Off Valve w/ Memory Stop | <input type="checkbox"/> Manual Flow Control Valve(s)    |
| <input type="checkbox"/> 2 - Way Motorized Valve         | <input type="checkbox"/> Automatic Flow Control Valve(s) |
| <input type="checkbox"/> 3 - Way Motorized Valve         | <input type="checkbox"/> Unions                          |
| <input type="checkbox"/> 2 - Way Modulating Valve        | <input type="checkbox"/> Pete's Plug(s)                  |

## General Description

- This horizontal discharge fan coil unit is designed for concealed installations above drop ceilings or over closets where ducted air systems are required. Typical applications are in hotels, motels, condominiums and commercial buildings. Open construction facilitates easy access.
- Exterior fabricated of 18 gauge galvanized steel with 1/2" matte-faced liner for maximum thermal and acoustical insulation.
- System charged with air to insure a leak free arrival at the job site.
- Throwaway filter.
- Manual Air Vent.
- Removable motor/blower assembly.

This submittal is meant to demonstrate general dimensions of this product. The drawings are not meant to detail every aspect of the product. Drawings are not to scale.

Superior Rex reserves the right to make changes without written notice.

All rights reserved. No part of this work may be reproduced or transmitted in any form or by any means, electronic or mechanical, including photocopying and recording, or by any information storage retrieval system without permission in writing from Air Distribution Technologies